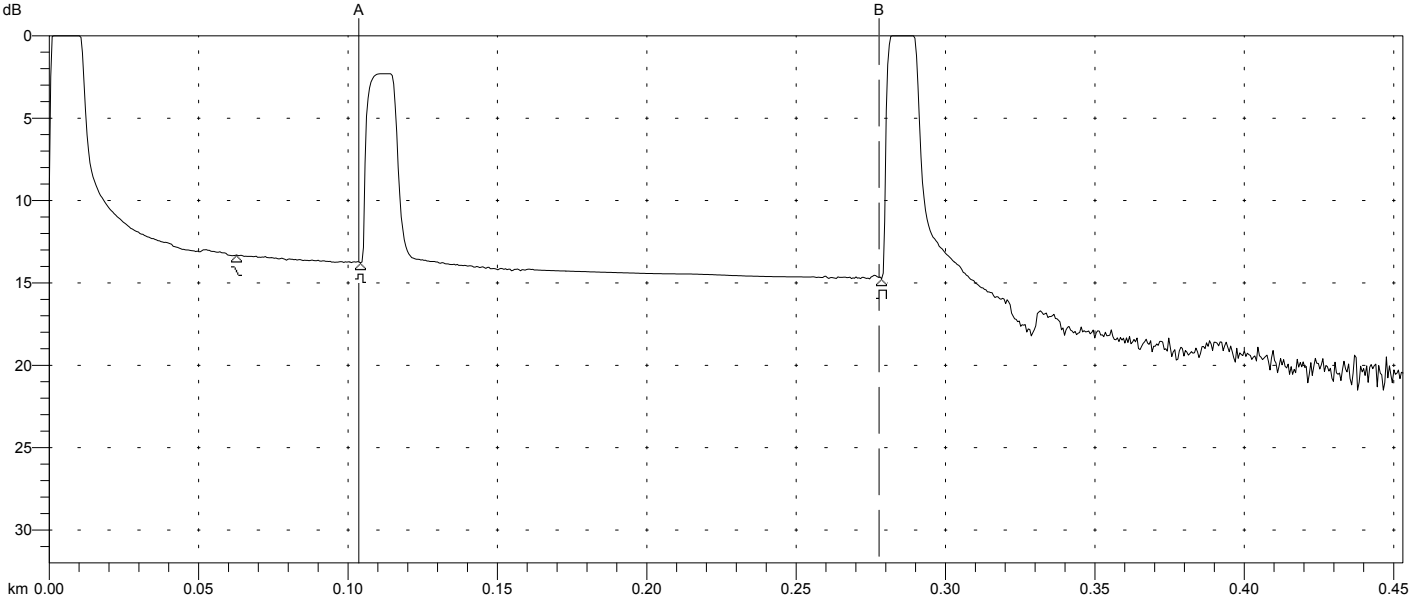


ENG11.018

8 km/0.50 m



A: 0.1036 km	Index: 1.482000	[H]: 100ns / 10.0m
B: 0.2778 km	2-Point Loss: 0.92 dB	Avg: Timed 1536
A -> B: 0.1742 km	Reflectance: >-24.16 dB	K2320M/850 nm/MM

```

-----
[Cable I.D.: Kabel 1 ]
[Fiber No.: 01      Fiber Type: 50/125 ]
[Sheath Length:    ]
[Test Site: 1. OG  ]
[Far Site: 2. OG   ]
[Date: 11-27-04   (mm-dd-yy) ]
[Operator: DH     ]
[Notes:          ]
[                ]
[                ]
-----
    
```

```

Primary Trace: ENG11.018      Trace Parameters:
Date: 11/27/04                Mode: AutoMode
Time: 08:08 PM                Range: 8 km
Product Type: Siecor 340      Resolution: 0.50 m
Opt. Module: K2320M           Pulse Width: 100 ns
Fiber Type: Multimode         WaveLength: 850 nm
FAS Thresholds:              Index: 1.482000
Loss: 0.05 dB                 Horz. Shift: 0.00 km
Reflectance: -60.00 dB        Vert. Shift: 0.00 dB
Fiber Break: 4.00 dB         No. Averages: 1536
Backscatter: -67.0
Trace Flags: FAS, Smooth
    
```

Analysis Results -- SUMMARY

Feature #/Type	Location (km)	Event-Event (dB) (dB/Km)	Loss (dB)	Refl (dB)
1/N	0.0627	0.12 1.92	0.25	
2/R	0.1042	?? ??	0.29	>-24.16
3/E	0.2787	?? ??	>4.00	>-17.78S

Overall (End-to-End) Loss: 1.39 dB
 ORL : N/A

NOTES:

